

How to Engage Youth to Discover Their Dream Career and Adapt

Aim for the North Star

Introducing SAFETY Works©



 *Jackie Marquette Ph.D.*

Integrates with Career Readiness Support Programs.

6 CEU's for PD/ Training



COMMISSION ON REHABILITATION
COUNSELOR CERTIFICATION

Receive 6
CEU's



This Introductory Book:
*How to Engage Youth to Discover Their
Dream Career and Adapt* may not be
reproduced. The ideas contained within this
document are copyrighted by ©Jackie
Marquette Ph.D., Marquette Index, LLC.
(2021). All Rights Reserved.
www.drjackiemarquette.com

YOU MAY:

- *Share the web site link to this document with your colleagues, other professionals, and parents.
- *When teachers/professionals want more information about enrolling in this course, refer them to www.drjackiemarquette.com drjackiemarquette@gmail.com

WHAT IS NOT ALLOWED

- *Copying or claiming as your own any part of this Introductory to my Course: *How to Engage Youth to Discover Their Dream Career and Adapt*.
- *Removing the copyright. Every page of this document is copyrighted.

Thank you for respecting these boundaries
Please email me at drjackiemarquette@gmail.com if you have any
questions.

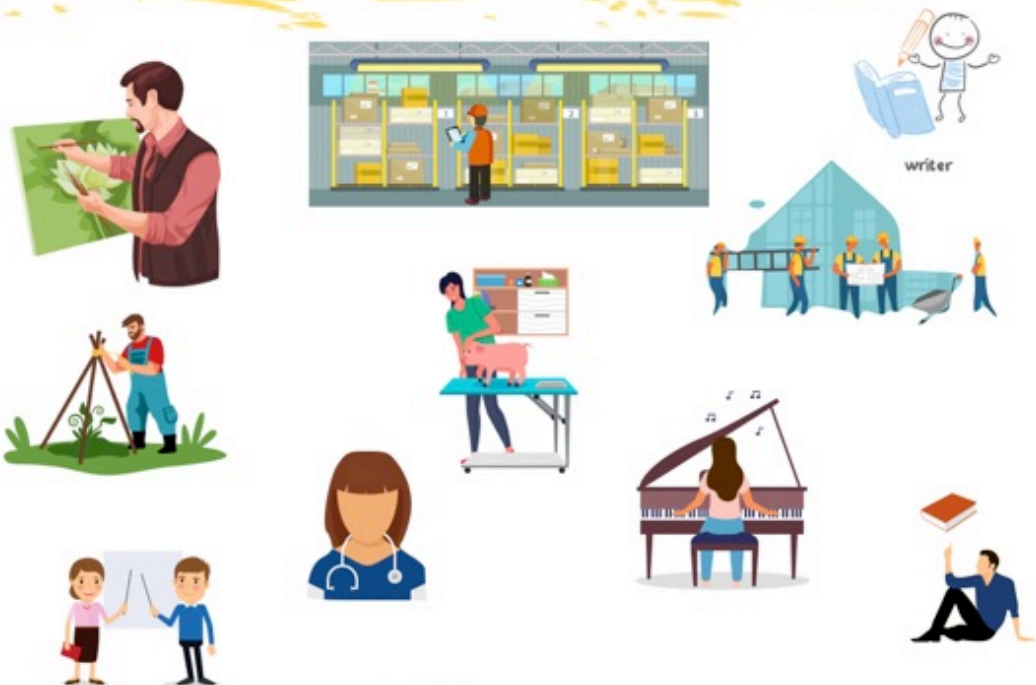
-Jackie



School Staff Have a Tough Task Ahead: Preparing Youth for Transition and Careers *(after the pandemic)*

Integrate

Social
Emotional
Learning with
Career
Preparation.



Enhance

potential for
youth
employment
or college
with meaning,
inclusion, and
adaptation.





Because of the pandemic that led to youth isolation and limited learning,

students have even greater needs to finding clarity, meaning, and adapting through obstacles during school transition and employment/college.

I offer this Course (Self-Study), along with much support to help you teach and prepare youth transition to employment. For Teachers, Counselors/Professionals, Job Coaches, Employers, and Parents/Advocates and Youth on the Autism Spectrum and Neurodiverse.

What's Inside The Course Workbook

- ★ 7 Mini-Modules of videos about 3 hours total viewing time with course handouts. Each lesson inside is a stand-alone video.
- ★ 18 tools
- ★ 6 downloadable Templates
- ★ One online access to the Marquette Strengths and Career Index©
- ★ 4 Downloadable Qualitative Evaluation Tools (Student self-assessments). Each with an Answer Key.
- *Careers, Careers, and More Careers
- *Careers & Self-expression-w/Talents and Interests Assessment
- *Careers: How To Make Work – Work For You
- *Marquette Self-Awareness Assessment© (MSAA). (Includes two forms: a Student Form and a Professional/Caregiver Form)
- ★ 2 Downloadable Planning Tools—
 - The Golden Wheel©,
 - The Predictability and Engagement Timeline©
- ★ 1 Infographic for planning supports for employment for the student who relies on a greater need for support.
- ★ 2-Downloadable student guided career exploration worksheets.
- ★ 1-Downloadable Student Certificate for Completing this Career Readiness Program
- ★ 1-Downloadable Student Poster: You are a Unique and Valuable Person
- ★ 1-Downloadable Student Signed Agreement to enter career exploration (to be signed by student and encourage h-her intention to explore and learn in a Career Readiness Program.
- ★ 1-Downloadable Career Readiness Program Completion: A Student Checklist
- ★ A Member-Only Private Facebook Group



Table of Contents

INTRODUCTION

WHAT'S IN THE COURSE WORKBOOK?	5
BASICS OF S.A.F.E.T.Y. WORKS	7
STRENGTHS DEFINED	8
S.A.F.E.T.Y. WORKS CURRICULUM OVERVIEW	9-10
MEET THE CREATOR	11

NINE DOMAINS TO PROMOTE ADAPTATION

TIERED MODEL OF S.A.F.E.T.Y. WORKS©	13
-------------------------------------	----

POTENTIAL BENEFITS

ASSESSMENTS

MARQUETTE STRENGTHS AND CAREER INDEX (ONLINE TOOL)	15-19
FIVE STRENGTHS + SELF AWARENESS SELF- ASSESSMENTS AND PROFESSIONAL ASSESSMENTS, PDF & GOOGLE APP	

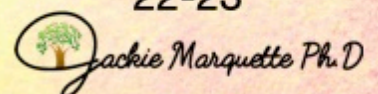
LESSONS

ENGAGING SHORT NARRATIVES FOR INDIVIDUAL OR GROUP DISCUSSION	20
---	----

PLANNING TOOLS

THE PREDICTABILITY AND ENGAGEMENT TIMELINE	21
---	----

CREATING A STUDENT INDIVIDUALIZED CAREER EXPLORATION PLAN	22-23
--	-------




INTRODUCTION

S.A.F.E.T.Y. Works© is designed to be utilized in both individual and group career readiness programs, and individualized to the student's unique strengths and needs. S.A.F.E.T.Y. Works© was designed to facilitate emergent learning about career interests, while cultivating strengths and capabilities that are integral to choosing and exploring a career direction.

S.A.F.E.T.Y. Works© consists of 9 domains presented in The Golden Wheel© to help increase the potential for inclusion and emotional adaptation. We first start with an assessment to identify strengths and to build career readiness skills. The focus is on social and emotional adaptation to reinforce student participation in career activities independently, in a group, and in the community.

S.A.F.E.T.Y. Works© stands for: 1. Recognizing Strengths and Challenges, 2) Increasing Self-awareness, 3) Fostering Engagement in Settings for Career Exploration, 4) Increasing Predictability to Enhance Favorable Learning Outcomes and Adaptation, 5) Transforming and Empowering Youth with Self-advocacy Training to Adapt and Reach Transition Career Goals

As you peruse this introductory book, you will be able to identify how the S.A.F.E.T.Y. Works© process can provide meaningful learning experiences that are not only potentially reinforcing to students in school transition, but facilitate the development of emotionally and socially significant skills for adapting to the workplace and community settings.



WHAT DOES
S.A.F.E.T.Y.
WORKS©
STAND FOR?

S.A.F.E.T.Y. Works©

What are Strengths?

- 1) You are good or have the potential to be good at it.
- 2) You are energized by doing it.
- 3) It benefits you and something greater than yourself.

~Marcus Buckingham and Donald Clifton,
authors of *Now, Discover Your Strength*

Everyone has strengths useful for
skill development and application
to employment.





S.A.F.E.T.Y. WORKS©

A Proven Model to Increase Potential for
Inclusion and Adaptation to Employment
and Life Goals

S Recognition of **S**trengths and challenges
with

A Increased Self-**A**wareness and

F Fostering engagement in settings
for career exploration

E Increasing Predictability to Enhance
Favorable Learning Outcomes and Adaptation

T Transforming and Empowering Youth with
Self-advocacy Training To Enable

Y Youth and **Y**oung Adult to Adapt And
Reach Transition Goals

Among Youth:

Self-awareness (SA) skills are a
scarcity.

Self-regulation (SR) skills are a
scarcity.

Knowing the value of strengths to
a career is a scarcity.

S.A.F.E.T.Y. Works© works because
when youth to develop (SA and SR)
skills they begin to feel safe within
settings, it can mean everything to
pursuing work or career goals with
adaptation.

 Jackie Marquette Ph.D.



S.A.F.E.T.Y. WORKS©

Curriculum Overview



Initial Strength Assessment

Both self-assessment or supportive assessment by teachers/parents/etc.

Strength Worksheets.

Review student's personalized jobs/careers options.

Self-Awareness Assessment

Lessons and worksheets. Apply self-awareness qualifiers to derive new ideas to implement.

Expanding Lessons

Teach though story about actual teens in real circumstances. Students will read, listen, and take part in group discussion and make self-advocacy decisions.

Assessment analysis and synthesis.


Use qualifying data to create a career exploration plan to implement in the community.

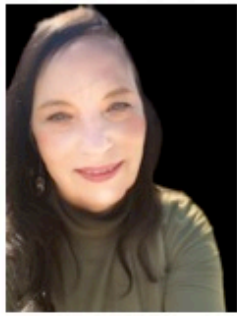
What skills does S.A.F.E.T.Y. Works cover?

S.A.F.E.T.Y. WORKS© helps you integrate with other transition and career readiness curricula but can stand alone as a program that targets strengths tied to specific careers in 4 areas: cognitive, self-expression (multiple intelligences), personal preferences and skills in social/emotional areas. Having a belief in one's abilities and capabilities is the highest predictor to transition employment success. The main goal is to promote learning and experiences that reinforce the student's belief and performance in h-her abilities and capabilities.

Who is S.A.F.E.T.Y. Works© for?

S.A.F.E.T.Y. Works© was designed for learners both neurotypical as well as neurodiverse, ages 14 and up.

 Jackie Marquette Ph.D



Meet the Creator

Jackie Marquette Ph.D.
drjackiemarquette.com

Dr. Jackie Marquette's experiences have spanned three decades of teaching students with learning/developmental disabilities, Autism Spectrum and 'at risk', spearheading an autism community workplace project at University of Louisville, implementing school district transition programs, consulting with school districts, delivering training to numerous school districts. Through the Office of Vocational Rehabilitation in KY., she used her own research based tools to offer an evaluation and consultation to help youth know their strengths and employment supports to aide their adaptation.

For 15 years, Jackie conducted research. Through long in-depth interviews she listened to the voices from 800 hundred participants: individuals with autism, advocate/parents, and professionals who worked with these young adults. She learned how they searched to find meaning within their lives, sought government supports, and created their own resources to go after goals. She used the data that emerged to create strength-based tools to help guide young adults to pursue their right job/career, training/college, tools to adapt, and/or to live independently and interdependently.

In her personal experiences, she learned to listen to the needs of her son with autism. Over the years, Jackie learned how to support his self-determination, self-advocacy and adaptation. Jackie and her son personally experienced many trials and errors with set backs and progress. Yet with personalized supports and strength recognition, he walked his own journey. Since 2001, as an artist he has exhibited his paintings in galleries and at fine art shows nationally and internationally. He is an award winning abstract artist, earning over 20 awards, namely the United Nation Autism Awareness Stamp, 2012.

The tools she created in S.A.F.E.T.Y Works© came out of her work, her research, and her life's experiences. Her program S.A.F.E.T.Y. Works©, a strength-based approach is engineered to be a catalyst in Educational School Leadership, with employers, and on behalf of youth who rely upon a greater need for supports in order to get and keep a job.

Dr. Jackie's E-COURSE: *How to Engage Youth to Discover Dream Careers and Adapt* is designed for educators and professionals who serve youth in school career readiness programs. Jackie introduced tools that promote student belief in themselves, enhanced self-awareness, on-the-job capability, self-advocacy and emotional adaptation. Six CEU's are offered for professional development through Council on Rehabilitation Counselor Certification (CRCC).

She has written 5 books, writes articles, blogs, and makes videos on supporting youth to manage emotions, become self-empowered and to use tools to self-advocate across all areas of their life: pursuing interests and talents, employment, college, living independently, connected and developing relationships.

She has been endorsed by highly recognized colleagues in the disability field for her skills in Autism Spectrum Disorders, Training, and Research. In 2007, Jackie earned a Ph.D. in Educational Leadership, Human Resources, and Education Administration at University of Louisville.

The Golden Wheel: Nine Domains to Promote Emotional Adaptation



People who see the best strengths and challenges in the student or young adult and willing to offer supports.



To have belief in oneself is the highest predictor of success.



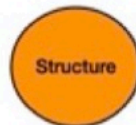
Being alert about physical needs, emotions, capability to act/participate, have comprehension about tasks, interactions with others, and to know one's desires.



Strengths refer to the abilities or capability a person holds that can be an asset to learning, performing an act or a task, or having heightened self-awareness that increases emotional adaptation.



Strengths refer to the ability or capability a person holds that can be an asset to learning, performing an act or a task, or having heightened self-awareness that increases emotional adaptation.



Structure: Creating an order to a task, a day, an event, to practice a talent, to study, to create something valuable, i.e., art. All for the purposes of staying on track and focused to reach a goal.



Settings to participate in to find meaning acceptance and inclusion. It can also include difficult settings to emotionally adapt to such as medical or dental office, etc.



To practice self-awareness & access tools to understand perform, connect, communicate, and adapt.



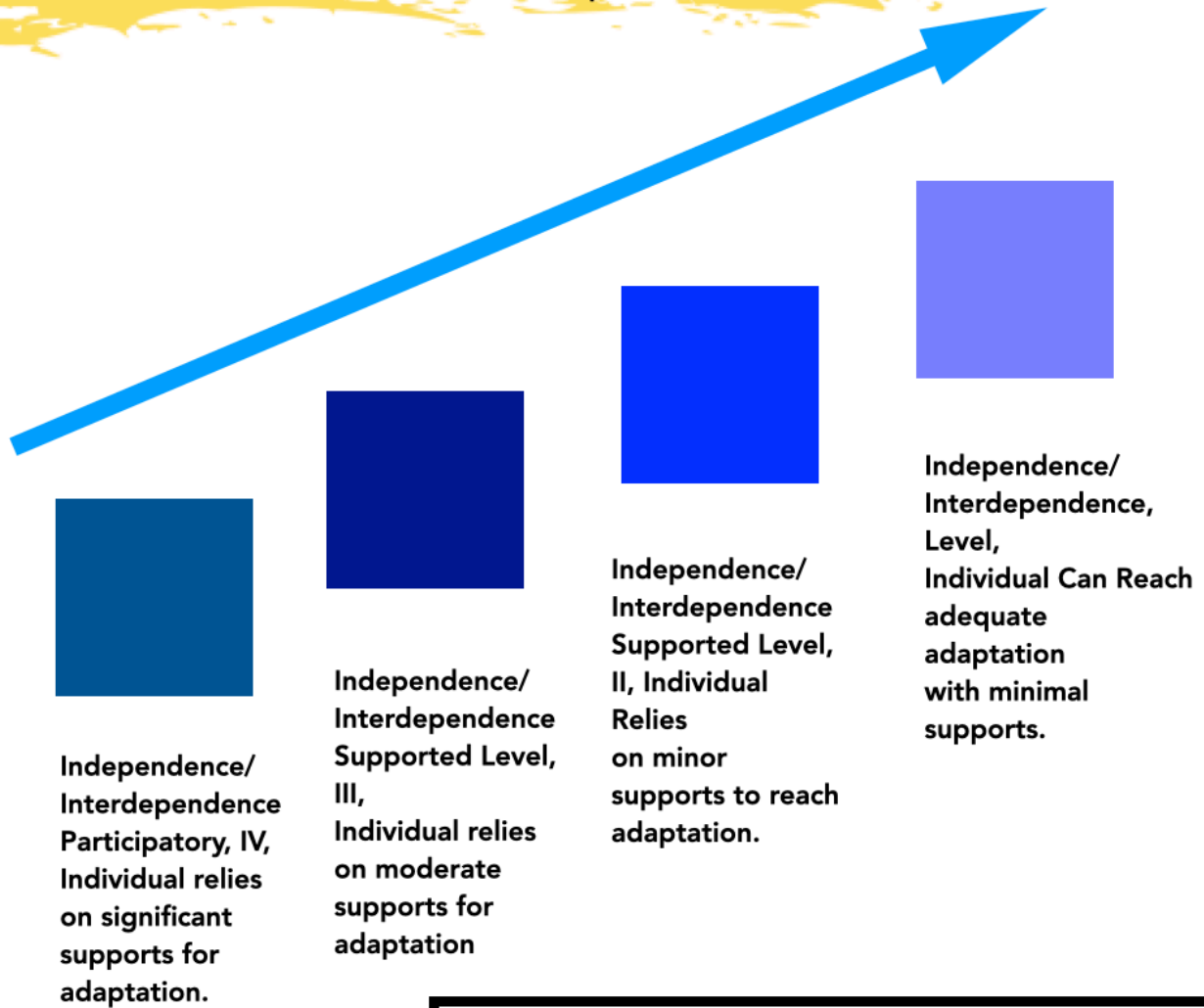
To understand when to speak up for oneself, or to ask someone to speak up for the student or with the student.

 Jackie Marquette Ph.D

Deci and Ryan's (1985). Self-determination Theory and Interactionary Theory (Self-Preservation).
Krell, M. & Peruses, R. (2012). Providing College Readiness Counseling for Students with Autism Spectrum Disorders: A Delphi Study to Guide School Counselors. ASCA/Professional School Counseling, 16, 29-38.

Tiered Model of S.A.F.E.T.Y. Works©

Interdependent-Independent Support
Levels to Increase Adaptation



S.A.F.E.T.Y. Works© is designed to facilitate adaptation for those at all levels.

After completion of the assessments (Strengths, Careers and Self-Awareness), you will determine the most appropriate level of supports needed for student to do lessons for exploring work and on-the-job placement. The curriculum will provide the adjustments that can be realized in the adaptation to work transition, career, and life goals. Once the student is aware of their strengths and receives personalized supports, h-she may move into a higher level of adaptation.

Potential Benefits

What abilities and qualities are important for a person to have to help assure the best quality of life? One of the world's leading scholars in autism spectrum disorders and communication disabilities gives us top priorities.

“Here are my top priorities: building self-expression and self-esteem, instilling happiness, creating positive experiences, and emphasizing healthy relationships. It’s also important to increase self-awareness and the ability to emotionally self-regulate.”

Uniquely Human: A Different Way of Seeing Autism (2016)
~ Barry M. Prizant, Ph.D., CCC-SLP - The SCERTS® Model

S.A.F.E.T.Y. Works© integrates the highly engaging and emotionally driven strength identification with career exploration. With interdependent and emotional adaptation theory to facilitate the development of performance with supports to aide emotional and social adaptation skills, youth can be effective in employment.

Potential Benefits of Integrating S.A.F.E.T.Y. Works© into your School Transition Career Readiness Program

- increase emotional self-awareness
- understand the value of personal preferences
- recognize own strengths in cognitive, talents, and self-awareness.
- acknowledge the value of one's strengths to a job or career
- develop flexibility
- practice team collaboration
- awareness on how to self-advocate on a daily basis
- enhanced self-regulation
- increases safety awareness (i.e., bullying)
- use on the job self-advocacy
- guided career direction and decision-making with self-reflection activities
- promote the belief in oneself
- empathy
- problem solving
- Includes all levels- Individuals with greater need for supports
- promotes workplace acceptance and inclusion

 Jackie Marquette Ph.D.



Marquette Strengths and Career Index©

Choose the tasks and careers that make
your heart sing.

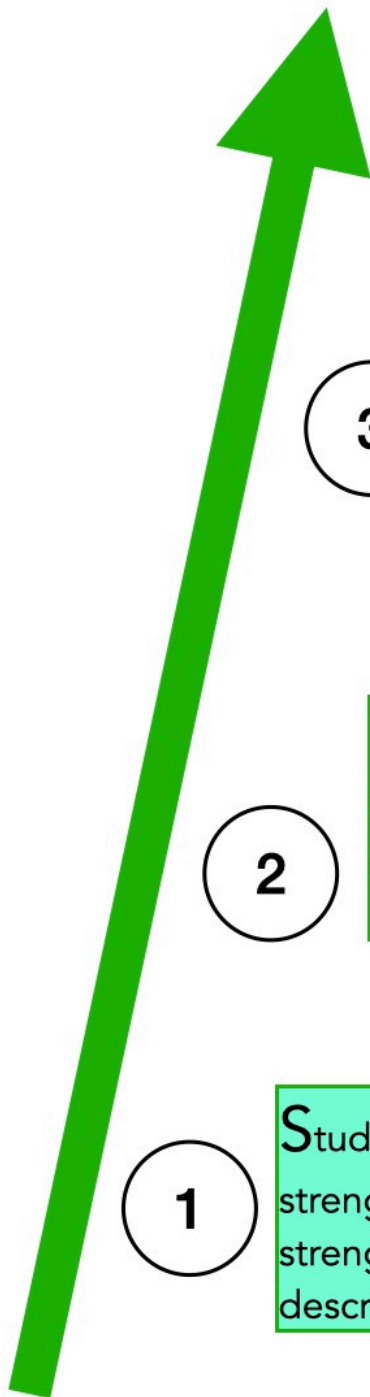


Scenario Based Assessment
both Informal Engaging



Marquette Strengths and Career Index[©]

an online Self-evaluation Tool



1

Students will get engaged reading the strength based scenarios (177) and select the strengths that match one of the three descriptions of strength definition.



2

In follow-up the student will use worksheets to assemble the sum of their strengths so they can make sense of their potential capability.



3

Career and job options are offered on every level, meeting student's needs: college, b certifications, c. high school degree, d. part-time, 3. volunteer or hobby.



4

MSCI[©] offers up to 466 jobs or careers.



Student Career Self-Assessments with Activities

Careers: How to Make Work Work for you.

Know your personal preferences and how important they are to doing well at work.

Understand your learning styles.

Recognize your patterns of doing a task that bring out your best.

Reduce your increase

Jackie Marquette Ph.D

SELF Expression

Careers, Careers, and More Careers
Self-expression in Interests and Talents

Careers, Careers, and More Careers
Self-expression in Interest and Talents

Arts and Talents

Arts and Talents

Arts and Talents

Arts and Talents

Arts and Talents

Arts and Talents

Arts and Talents

Take a Drive through Gifts and Talents
Discover Your Career Options

Youth Opportunity Academy

Hard Skill STRENGTHS

Careers, Careers, and More Careers

Take a drive through your interests
Discover your personalized career direction

Youth Opportunity Academy

Jackie Marquette Ph.D

Jackie Marquette Ph.D

Qualifiers To Identify Determine Personal Strengths

adapt

collaborate

initiate

empathy

communicate

trust

better
self-
control

focused
ability

motivate



Student Personal and Social Capability Self-Assessments

The Marquette Self-awareness Assessment

Student self-assessment

The Marquette Self-awareness Assessment

Professional/parent Form

 Jackie Marquette Ph.D



©Jackie Marquette Ph.D., Marquette Index, LLC. (2021). www.drjackiemarquette.com

S.A.F.E.T.Y. Works© offers engaging short narratives. These stories offer group discussion and self-reflection to increase concept repertoires that encourage self-awareness, self-regulation, and self-expression.



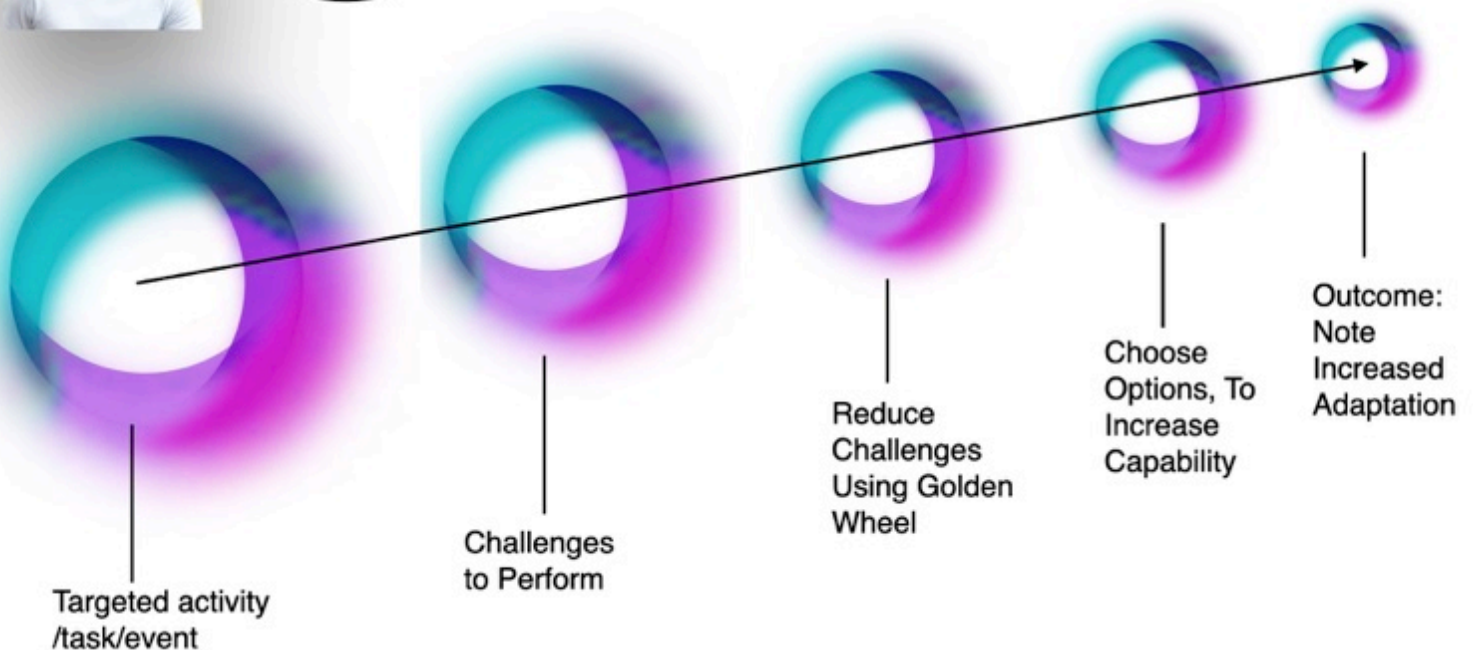
 Jackie Marquette Ph.D

A Planning Tool For Preparation to Enter New Setting

The Predictability and Engagement Timeline



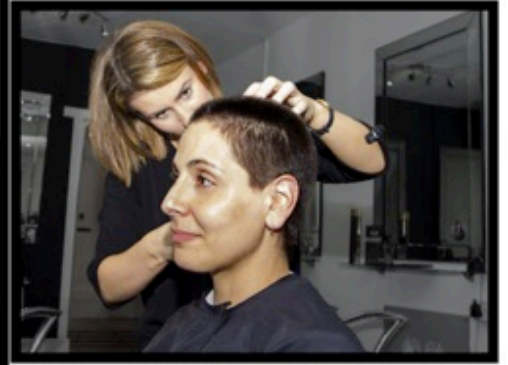
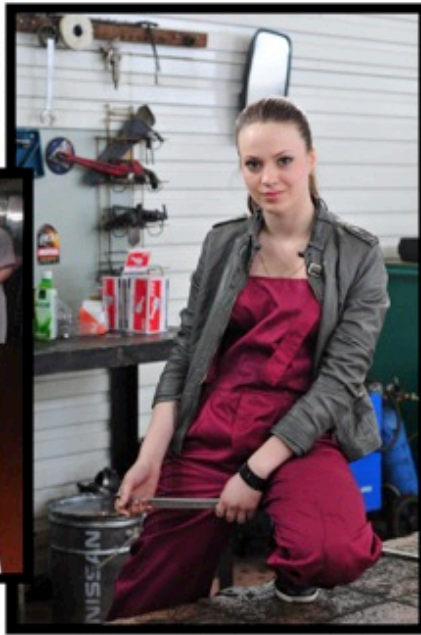
I can see where I am going





**Get Students
Engaged in Their
very Own
Personalized Career
Exploration
Experiences**





Student Lessons to Create an Individualized Career Exploration Plan



 Jackie Marquette Ph.D

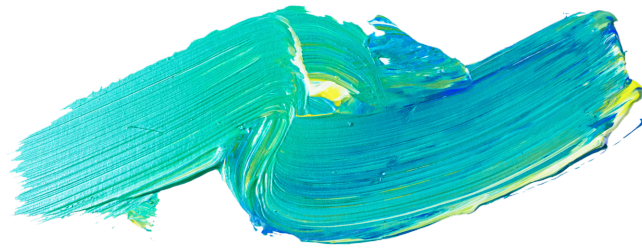
6 CEU'S
by
CRCC

E-COURSE/SELF-STUDY

How to Engage Youth to Discover Their Dream Career and Adapt
Career and Adapt
INCLUDES THESE RESOURCES

The collage features several key resources:

- How to Engage Youth to Discover Their Dream Career and Adapt**: A main title card with a starburst graphic and the text "Includes Inviting Career and Adaptive Assessments and Tools".
- Marquette Strengths and Career Index®**: A "Student Strength Self-evaluation Tool" featuring illustrations of students.
- Hand Skills STRENGTHS**: A colorful infographic titled "Careers, Careers, and More Careers" with a winding path and the text "Discover your personalized career direction".
- SELF-expression**: A graphic titled "Careers, Careers, and More Careers Self-expression in Interests and Talents" showing a path with icons for "All your Talents" and "All your Interests".
- Careers: How to Make Work Work for You**: A yellow infographic with tips like "Know your personal preferences and how important they are to doing well at work" and "Understand your learning style".
- YEARS TO READY (for College, Job or a Career)**: A blue infographic showing a pyramid of skills and a timeline from 12th grade to 18th grade.
- Qualifiers To Identify Determine Personal Strengths**: A green infographic listing traits like "adapt", "collaborate", "initiate", "empathy", "communicate", "trust", "better self-control", "focused ability", and "motivate".
- STUDENT WORKSHEET ACTIVITY: EXPLORE A CAREER**: A white worksheet with photos of students and a central image of a person.
- The Marquette Self-awareness Assessment**: A yellow infographic with a student illustration and the text "Student self-assessment".
- The Marquette Self-awareness Assessment Professional/parent Form**: A yellow infographic with a student illustration and the text "Professional/parent Form".
- The Predictability and Engagement Timeline**: A white infographic showing a sequence of steps: "Personal ability", "Changes in Interest", "Change Career Idea", "Change Career, to increase Clarity", and "Explore New Interests".
- Student Worksheets on Careers**: A white infographic with photos of students and the text "Student Worksheets on Careers".
- The Golden Wheel: Nine Domains to Promote Emotional Adaptation**: A circular infographic with nine domains: "Personal Strengths", "Water in one's ability", "Strengthful Challenges", "Structure", "Personal & Social Readiness", "Emotional Resilience", "Self-advocacy", "Self-empowerment", and "Personal Responsibility".
- Get Students Engaged in Their very Own Personalized Career Exploration Experiences**: A blue infographic with photos of students and the text "Get Students Engaged in Their very Own Personalized Career Exploration Experiences".
- Career Exploration: Student Agreement**: A white infographic with a student photo and the text "Career Exploration: Student Agreement".
- Student Completion of the S.A.F.E. Works@ Career Readiness Program**: A white infographic with the text "Student Completion of the S.A.F.E. Works@ Career Readiness Program" and photos of students.
- S.A.F.E. Works@**: A white infographic with the text "S.A.F.E. Works@ offers engaging short... narratives. These stories offer group discussion and self-reflection to increase concept repertoires that encourage self-awareness, self-regulation, and self-expression." and photos of students.



RELEASE INFORMATION

**Tentative release date is
July 27, 2021.**

S.A.F.E.T.Y. Works© with Course Study: *How to Engage Youth to Discover Their Dream Career and Adapt* is published and distributed with City Bear Press!

Join the waitlist to be notified via email for updates! <https://www.drjackiemarquette.com/get-my-newsletter/>

Updates or changes that may arise from the preparation of the curriculum will be posted via City Bear Press and [drjackiemarquette.com](http://www.drjackiemarquette.com)

